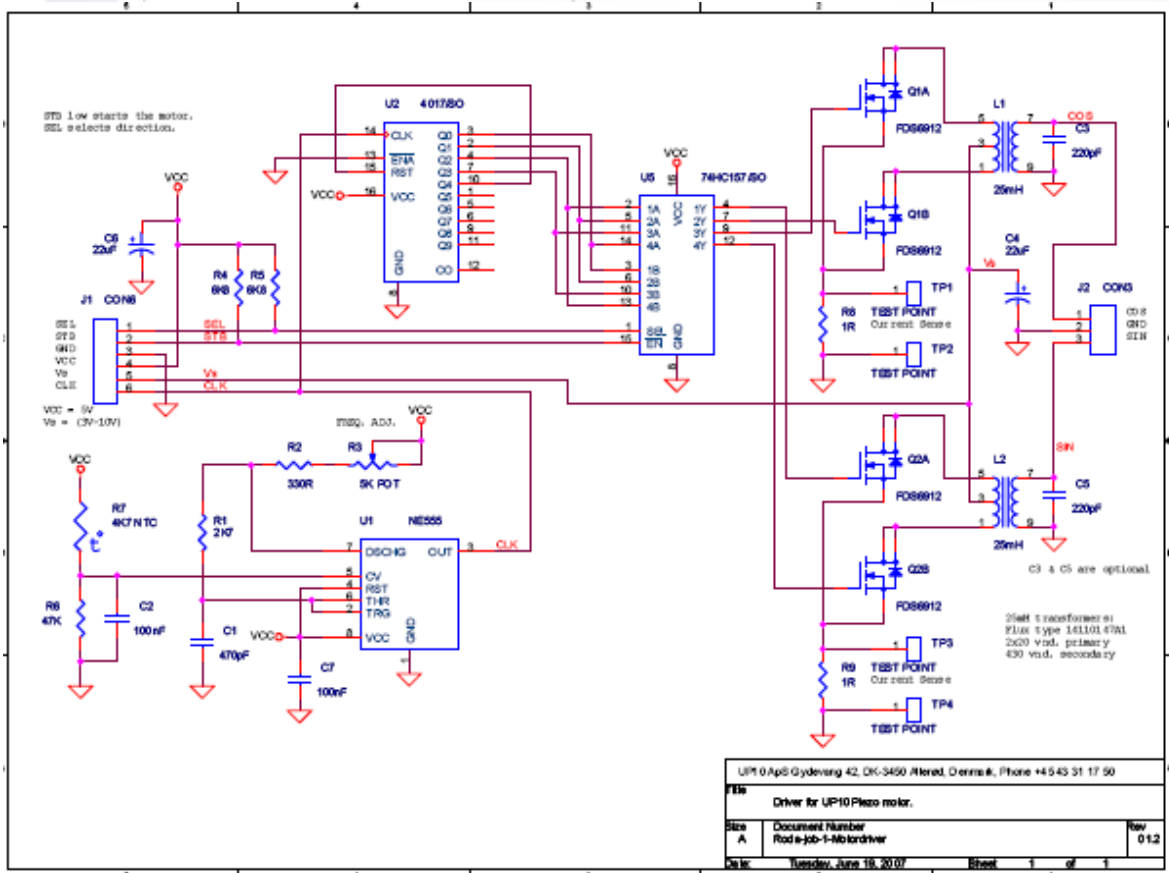




# Driver PCB (Included in Demo-kit)

## Diagram:



## Specifications:

Supply voltage	5V DC	VCC
Drive supply	0 - 5V DC	Vs
Power consumption	2W	max
Output	0 to 200V	rms (Vs: 0-5V)
Connectors	6 pin	J1: Control
	3 pin	J2: 2 phase output
PCB Dimension:	40 * 50 mm	
Direction	CW/CCW	TTL input SEL
Start / stop	on/off	TTL input STB

Software provided free of charge for control via PC LPT port

## Layout:

