



Dear Customer,

February 6, 2012

Thank you for pre-ordering a High Resolution Twin Motor Kit.

We're happy to inform you that the first series of the kit is fully functional and has passed the initial testing with good results.

We're improving all the time

Some minor updates to the firmware may occur over the next few weeks.

We'd be grateful if you could take advantage of this and test the Twin Motor Kit for yourself. Feel free to send us your findings or suggest any improvements to the controller software. This kind of feedback is valuable to us, and often instrumental in improving our kits – and ultimately your applications – in the long run.

Naturally, we'll upgrade or replace your kit should you find any major bugs.

With your agreement, we'll include a simple freeware RS232 communication program (Termite 2.6) to control the kit directly via your PC, which uses the controller's built-in command language. You will soon be able to download a more comprehensive software package of our own to fully demonstrate the different possibilities of the High Resolution Twin Motor Kit.

Contact me directly

If you've any questions or need further assistance with the kit in this initial phase or until all the final documentation is available, email me at ej.pcbmotor@gmail.com or call me directly on +45 2061 9642.

We're continually working to improve the High Resolution Twin Motor Kit as well as our documentation, so please report any issues or discrepancies to us at info@pcbmotor.com

Kind regards,
Eivind Johansen

PCBMotor ApS
Krakasvej 17
3400 Hilleroed
DENMARK

T: +45 +45 70 28 3210
F: +45 70 28 32 11

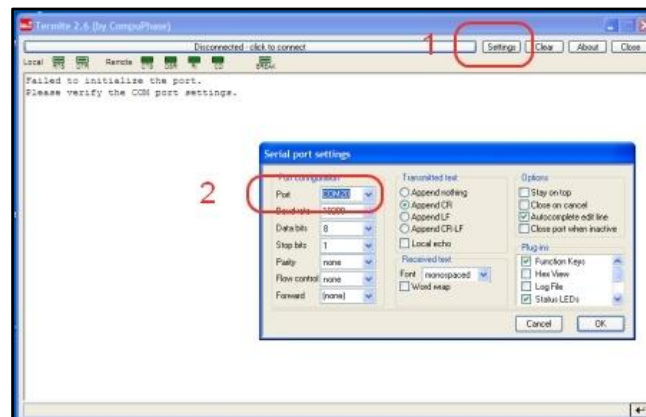
info@pcbmotor.com
www.pcbmotor.com
[Follow us on LinkedIn](#)

USER DOCUMENTATION

Quick Guide for High Resolution Twin Motor v1.1

February 6, 2012

1. Copy the Termite directory to your PC. It's not necessary to install the program, simply run termite.exe directly from the supplied files to take advantage of the existing configuration file.
2. Start Termite. Go to *Settings* then *Ports* and click the down arrow '↓' to see which ports are in use. Click *Cancel* to get back to the main page.



3. Connect the High Resolution Twin Motor kit to a USB port and wait (a few minutes) until the PC installs the drivers and reports that the unit is ready. You'll need to be connected to the internet if the FTDI drivers are not installed on your PC.

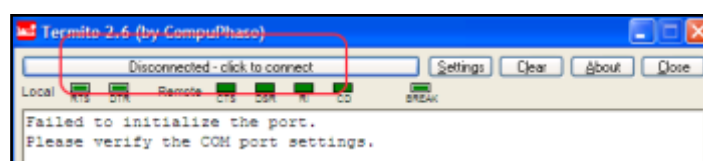
Note: The kit is designed to communicate with any PC and operating system with an RS232 serial line and 19200 Baud.

Installing the drivers on Windows

If Windows doesn't automatically find and install the required drivers:

- a. Disconnect the kit from your PC.
- b. Go to [FTDIChip's website](http://www.ftdichip.com/Drivers/VCP.htm) - <http://www.ftdichip.com/Drivers/VCP.htm> - and download the driver that corresponds to the Windows operating system on your PC.
Save and unpack the zip file locally to your PC.
- c. Reconnect the kit (USB) to your PC and when the Windows XP *Found New Hardware* driver installation wizard appears, select "Specific location" - pointing to the location where you unpacked the FTDIChip zip-file.
- d. Click OK and let the wizard install both (two) drivers.

Note: After disconnecting the kit, you will need to reconnect to it in Termite by clicking twice on the "blue handshake bar" (*Disconnected – click to connect*) at the top of the window. See image below.



4. Go back to *Settings, Ports* and click the down arrow ‘↓’ to see the number of the port that was assigned to the High Resolution Twin Motor Kit. Select the corresponding port and click *OK*. Termite will now display “Termite is initialized and ready.”

Click on list to see the list of ports available.

5. In the command line at the bottom of the screen, type ‘h’ (help) for a complete list of the commands.

6. Type ‘p’ to *power up* the motor driver. Observe that the motor does a calibration sweep and nearly a half-turn before returning to the starting point.

The motor is now ready.

Commands

Do **not** use white spaces when entering commands.

Example: Type `s100,s-100,x5` – This is equivalent to “Step100,Step-100,Xrepeat5”

Function keys

The function keys F1 to F12, have a set of pre-programmed macros for you to test.

IMPORTANT

1. Do not exceed a motor current of 450 mA when changing the voltage setting or the memory positions. This has an impact on the voltage, such as the CW/CCW scaling and ramp up/down.
2. Be gentle with the shafts and rotor springs, you can damage the springs with excessive force. We are aware of this and will improve the mechanical safeguarding of the construction.

Note:

1. Auto-completion is switched ON by default in Termite to help you complete your commands. Simply type the first character and then use the down-arrow to get to the last command starting with that character.
2. If you run a command that takes forever, click twice on the DTR signal at the top of the Termite window to stop the execution and get back to the command prompt ‘>’.
3. After disconnecting the kit, you need to reconnect to it again in Termite by clicking the “blue handshake bar” (*Disconnected – click to connect*) at the top of the window. See image below.

